

How to assemble FourUs Work Booth

FourUs Work Booth®

FourUs Booth:

Please read the full instruction before starting the assemble, as some of the steps need to be done continuous.



Tools used in the manual:

Size 13" socket wrench

Drill with bits accordingly



1

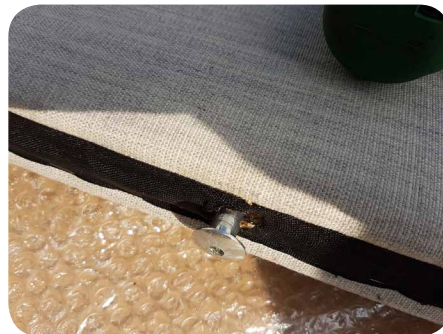
ATTENTION:

- 1) ALL BOLTS AND SCREWS ATTACHED NEED TO BE USED FOR CORRECT ASSEMBLY!
- 2) Do not use a knife or other sharp object to unpack the product.
- 3) Always be at least two persons to set up the FourUs Booth.
- 4) Make sure to be gentle when handling the Booth components.
- 5) Be careful not to let the fabric touch the floor, as it can be damaged or get dirty.

- 2 Unpack the different components and attach all footplates with the attached M6 bolts. It is important not to tighten the footplates fully on those which is connecting points to the backwall. Afterwards screw the legs on the footplates.



- 3 Under the wall there are 4 nut-head screws which need to be screwed approximately 1cm out (it should not be possible to pull the threaded rod which is connected out).



- 4 In the end of the backwall which is going to be attached to the side with a seat, there are 3 screws which can be turn out so they fit into the keyholes on the seat-wall.



- 5 Place the back wall on top of the footplate on each side wall. It is important to have the footplate a little loose, while doing this. However, make sure the leg is horizontal at the same time. In this position, screw out the nut-head screw under the backwall closest to the sidewall without a seat, and let the threaded rod drop to the floor.



- 6 Lift the toppart of the wall 1 cm, so it is possible to aim the L-profile - which is sticking out from the sidewall - in between the toppart and bottompart of the wall. Press the threaded rod up so it is placed through the L-profiles hole.



- 7 Now attach the bolts for the footplate. It is important the footplate is a little loose, as shown on the pictures below, before tightening all the bolts.



- 8 Tighten the 4 nut-head screws in the bottom of the backwall. They are connected to the top part of the wall, so tighten until the gap in the backwall is gone.



- 9 Insert the longest bolts (4pcs) under the seat. It goes through the seat hole and into the wall where a threaded bush is placed.



10 Repeat step 9 until all of the bolts are tighten so hard, that you can hear the wood squeak. It is important that the foam/fabric in the couch and wall are pressed together as the picture below shows.



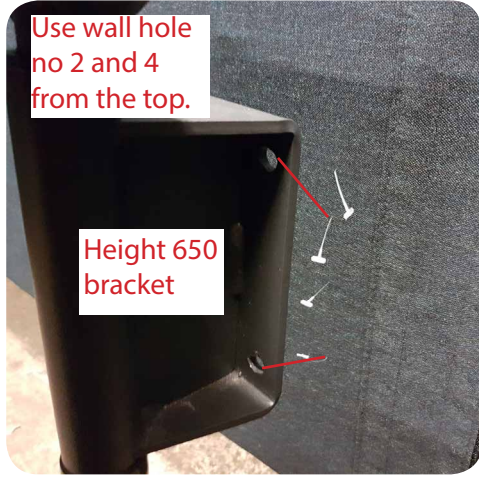
11 Before attaching the bolts into the footplates, it is important to screw the bolts which is already in the seat out a little, so the footplate is loose, as shown on the pictures below.



12 Screw the bolt in the wall, first using fingers and then tighten with according tools. It might be necessary to tweak the couch a little while aiming the bolts into the holes.



13 There are 8 holes for the pivortable which is marked with a white pin (see left picture below). Only 4 holes will be used - which ones depend on the height on the tabletop. See pictures below for which holes to use for the different tabletop heights. Cut a 1cm cross lines on top of each the 4 holes you want to attach screws in.



14 Place the bracket on the pivortable so the 4 holes are concentric with the 4 holes which is going to be used according to step 14. When the bracket is in place, screw the bolts (with washers attached) loosely in with the fingers, before tightening up with a tools.



15 The FourUs Work Booth is now fully assembled.
Attention: When moving the FourUs Work Booth, it is important to be 4 or more people, to take as much pressure off the legs as possible.

